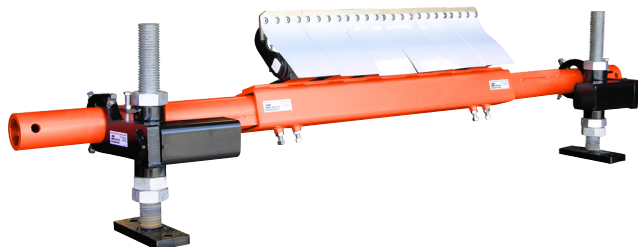


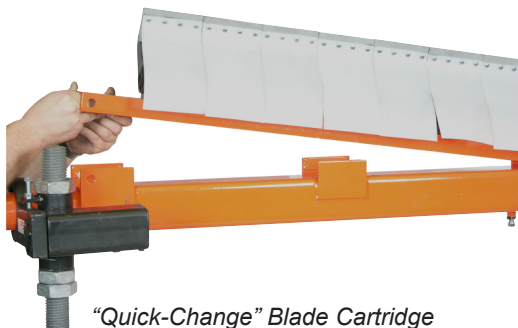
Martin® O2 Cleaner



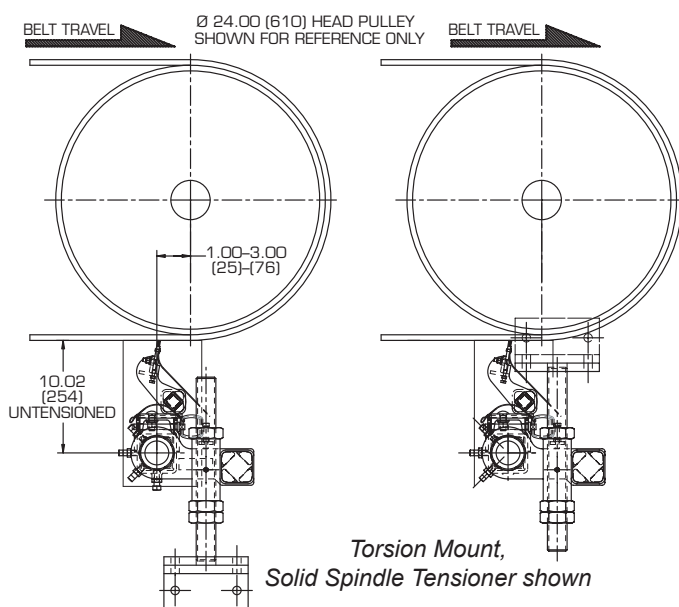
The **Martin® O2 Cleaner** utilizes a unique flexing blade mount to cushion splice impact while maintaining cleaning pressure.

BENEFITS

- “Paint-scraaper” cleaning angle provides maximum removal of conveyor belt carryback.
- Tungsten carbide blade tips provide effective and long-lasting cleaning.
- Blade shield allows removed material to slide off without buildup.
- Blade holder flexes to allow tip deflection in the direction of belt travel for splice passage and has individual machined blade adjustment.
- “Quick-change” blade cartridge simplifies maintenance.
- Optional water spray system improves cleaning efficiency and dust suppression.

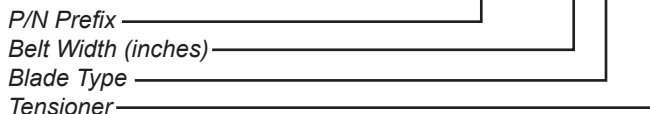


“Quick-Change” Blade Cartridge



NOMENCLATURE

OR2000-XXX-XXX



BLADE OPTIONS

- W: Wear Carbide with Polyethylene Deflector
- T: Wear Carbide with Teflon Deflector

TENSIONER OPTIONS

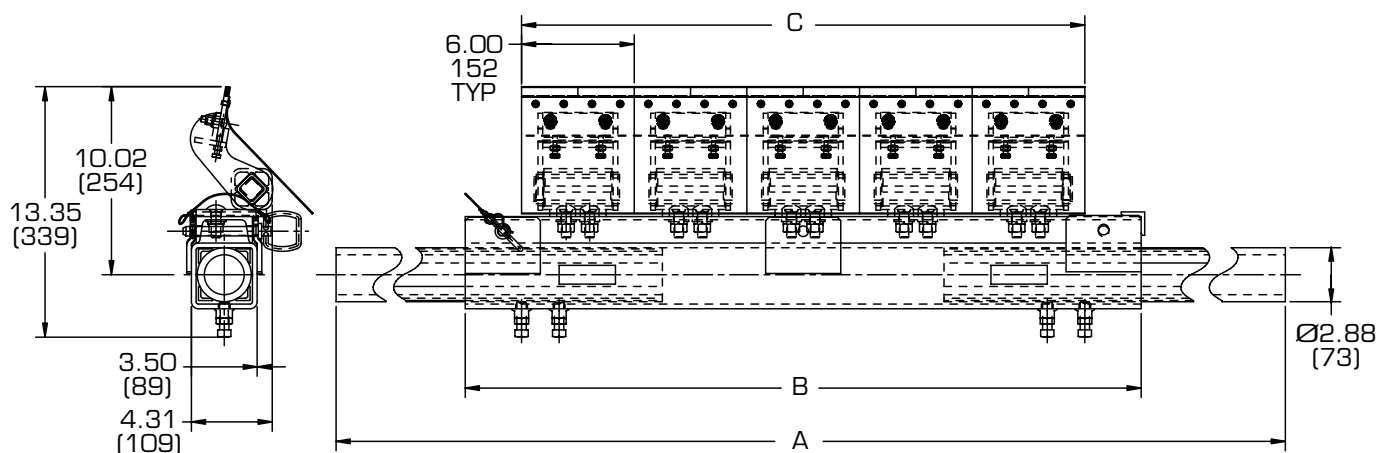
- TA2: Torsion Mount, 24” Top-Adjusting Spindle
- TA3: Torsion Mount, 36” Top-Adjusting Spindle
- TS: Torsion Mount, 16” Solid Spindle
- SA2: Solid Mount, 24” Top-Adjusting Spindle
- SA3: Solid Mount, 36” Top-Adjusting Spindle
- SS: Solid Mount, 16” Solid Spindle

TECHNICAL DATA SHEET

DIMENSIONS – in. (mm)

* Use with Solid Mount Tensioners.

Part No.	A		B		C		Blade Quantity	Ship Weight w/o Tensioners lb (kg)	
OR2000-30X-XXX	81	(2057)	30	(762)	24	(610)	4	140	(64)
OR2000-36X-XXX	87	(2210)	36	(914)	30	(762)	5	155	(70)
OR2000-42X-XXX	93	(2362)	42	(1067)	36	(914)	6	172	(78)
OR2000-48X-XXX	99	(2515)	48	(1219)	42	(1067)	7	186	(84)
OR2000-54X-XXX	105	(2667)	54	(1372)	48	(1219)	8	204	(93)
OR2000-60X-XXX	111	(2819)	60	(1524)	54	(1372)	9	218	(99)
OR2000-66X-XXX	117	(2972)	66	(1676)	60	(1524)	10	233	(106)
OR2000-72X-XXX*	123	(3124)	72	(1829)	66	(1676)	11	250	(113)
OR2000-84X-XXX*	135	(3429)	84	(2134)	78	(1981)	13	281	(127)
OR2000-96X-XXX*	147	(3734)	96	(2438)	90	(2286)	15	313	(142)



TENSIONER OPTIONS

Part No.	Tensioner Part No.	Description	Spindle Length in. (mm)		Ship Weight lb (kg)	
OR2000-XXX-TA2	OR-3-TMTA-24	Torsion Mount, Top-Adj. Spindle	24	(610)	130	(60)
OR2000-XXX-TA3	OR-3-TMTA-36	Torsion Mount, Top-Adj. Spindle	36	(762)	145	(66)
OR2000-XXX-TS	OR-3-TMSP	Torsion Mount, Solid Spindle	16	(406)	115	(52)
OR2000-XXX-SA2	OR-3-SMTA-24	Solid Mount, Top-Adj. Spindle	24	(610)	96	(44)
OR2000-XXX-SA3	OR-3-SMTA-36	Solid Mount, Top-Adj. Spindle	36	(762)	113	(51)
OR2000-XXX-SS	OR-3-SMSP	Solid Mount, Solid Spindle	16	(406)	83	(38)
OR2000-XXX-DSSX	OR-3-DSM	Dual Solid Mount, Solid Spindle	16	(406)	90	(41)



Martin Engineering USA

One Martin Place
 Neponset, IL 61345-9766 USA
 800 544 2947 or 309 852 2384
 Fax 800 814 1553
 www.martin-eng.com

**COMPANY WITH
 QUALITY SYSTEM
 CERTIFIED BY DNV
 = ISO 9001:2008 =**

Problem Solved™ GUARANTEED!

Form No. L3709-08/12
 © Martin Engineering Company 2005, 2012