

Martin® SAF2™ Cleaner



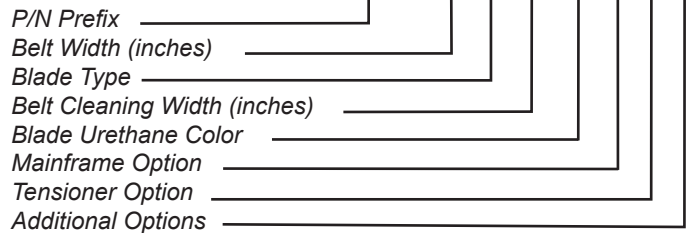
Tensioned gently against the belt, the [Martin® SAF2™ Cleaner](#) removes carryback without damage to belt, splices, or cleaning edge. Using its unique, low-pressure “deflected blade” design, the Martin® SAF2™ Cleaner is the cleaning system suitable for any conveyor, even “worst-case” belts.

BENEFITS

- Controls Carryback At The Head Pulley**
 Effective cleaning system provides immediate relief from conveyor belt carryback.
- Effective Cleaning With Low Pressure**
 Three-inch wide (76-mm) blades need only low pressure against the belt to maintain cleaning contact.
- Gentle For Belt And Splices**
 Light cleaning “touch” reduces risk of damage, even on belts with rips or “ugly” splices.
- Long Service Life**
 Low-pressure cleaning means urethane blades provide lasting service. For more challenging conditions, specify tungsten carbide inserts.
- Fast, Simple Installation**
 Compact, flexible clamp mount design allows positioning inside or outside chute, or on an open conveyor. Typical installation takes 90 to 120 minutes.
- “No Tool” Blade Replacement**
 Release one clamp and pull one pin to remove blade cartridge from mainframe. Individual three-inch wide (76-mm) blades slide out easily; replacement blades slide into cartridge for fast, simple service.
- Minimal Adjustment**
 As blades wear, the inherent shape memory of urethane automatically compensates so contact and pressure remain fairly constant. This extends service life and reduces maintenance.

NOMENCLATURE

SAF2S-XX X XX XX X X X



BLADE TYPE

- T:** Tungsten Carbide
- U:** Urethane
- Ø:** No Blades

BLADE CLEANING WIDTH

Full belt width or Approx. 6 inches less belt width.

URETHANE COLOR

- O3:** Orange
- B3:** Brown
- G3:** Green
- N3:** Navy Blue
- Ø:** No Blades

MAINFRAME OPTIONS

- P:** Painted Mainframe
- S:** Stainless Mainframe

TENSIONER OPTIONS

- T:** Tensioner included
- Ø:** No Tensioner
- S:** 316 SS

ADDITIONAL OPTIONS

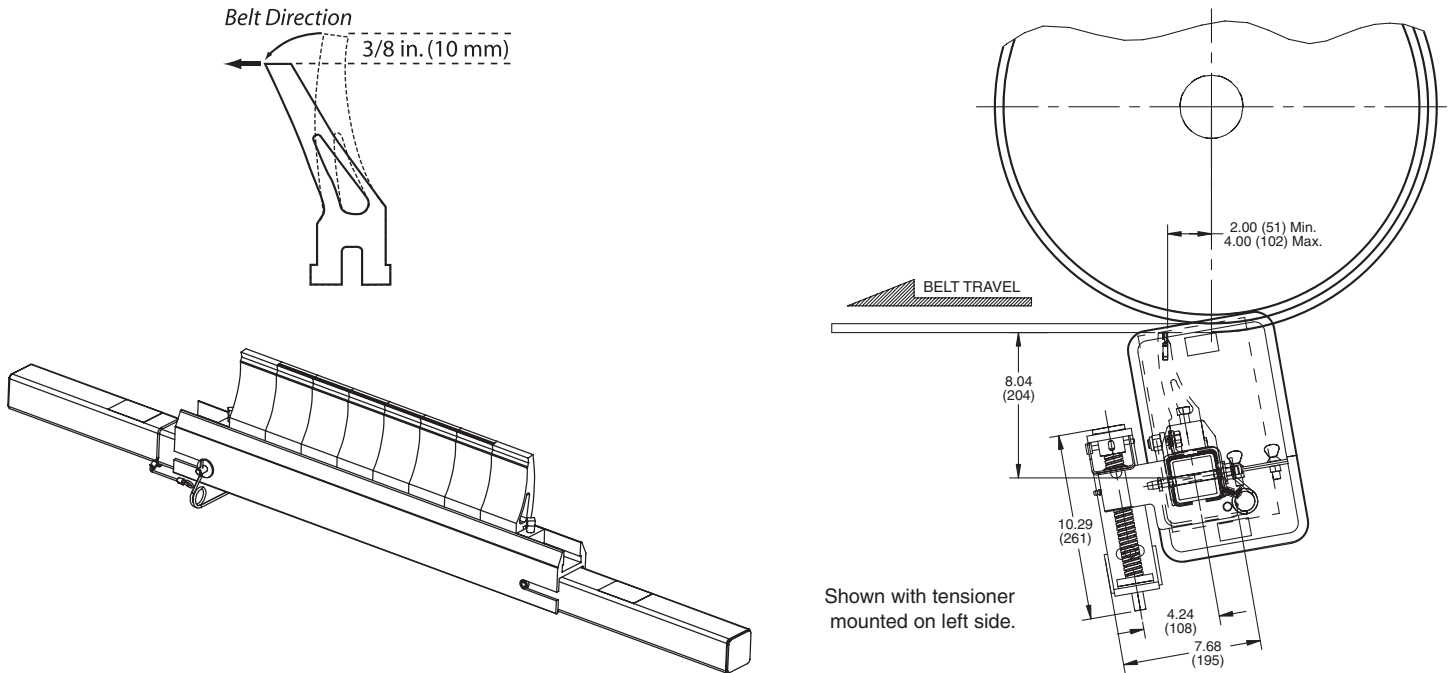
- Ø:** None
- D:** Dust-Tight Steel Cover Door

TECHNICAL DATA SHEET

APPLICATION NOTES

Martin Engineering recommends that the Martin® SAF2™ Cleaner be installed so the cleaning blade contacts the belt at a point 2 to 4 in. (51 to 102 mm) after the point where the belt leaves the head (discharge) pulley. If obstructions prevent installation at this point, or if additional cleaners are desired, the cleaner should be installed 2 to 4 in. (51 to 102 mm) past the point where the belt leaves the support idler.

See your Martin Engineering representative for more information, or visit www.martin-eng.com.



MARTIN® SAF2™ BLADES

COLOR	GENERAL APPLICATION	Replacement Blade P/N
Orange	General Applications: TC Blade	38718-T
Orange	General Applications: Urethane Blade	38718-U
Brown	Acid-Resistant: TC Blade	38718-TBR
Brown	Acid-Resistant: Urethane Blade	38718-UBR
Green	Hi Temperature: TC Blade 300°F continuous 350°F intermittent	38718-TGR
Green	Hi Temperature: Urethane Blade 300°F continuous 350°F intermittent	38718-UGR
Navy Blue	TC Blade for use with sticky or tacky materials	38718-TNB
Navy Blue	Urethane Blade for use with sticky or tacky materials	38718-UNB

TC = Tungsten

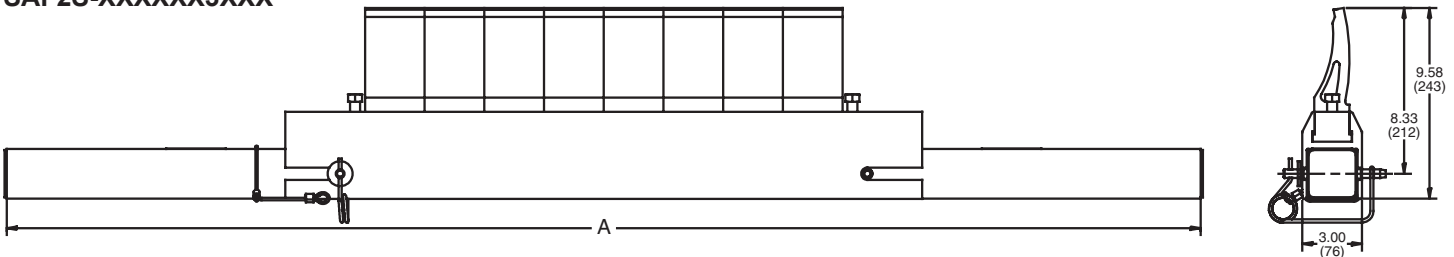
TECHNICAL DATA SHEET

DIMENSIONS

Belt Width	DIM "A" in. (mm)	# of Martin® SAF2™ Blades* (Belt Width minus 6")	# of Martin® SAF2™ Blades* (Full Belt Width)
18 (450)	48.00 (1219)	4	6
24 (600)	54.00 (1372)	6	8
30 (750)	60.00 (1524)	8	10
36 (900)	66.00 (1676)	10	12
42 (1050)	72.00 (1829)	12	14
48 (1200)	78.00 (1981)	14	16
54 (1350)	84.00 (2134)	16	18
60 (1500)	90.00 (2286)	18	20
66 (1650)	96.00 (2438)	20	22
72 (1800)	102.00 (2591)	22	24
78 (1950)	108.00 (2743)	24	26
84 (2100)	114.00 (2896)	26	28
90 (2250)	120.00 (3048)	28	30
96 (2400)	126.00 (3200)	30	32

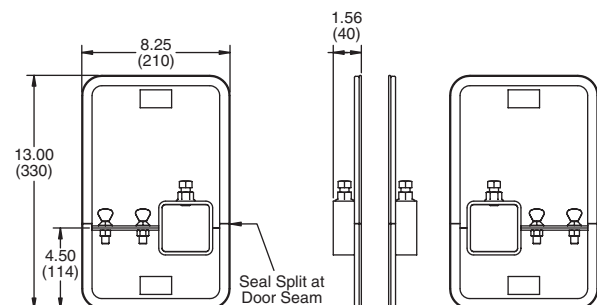
*Quantity represents total blades on the cartridge. Each cartridge has a minimum of two urethane blades, one on each end of the cartridge. The blades in between are available in either urethane or tungsten carbide.

SAF2S-XXXXXX3XXX



PART	P/N
Martin® SQC2S™ Split-Cover Door	38014-SQC
Martin® Hanger Mount Heavy-Duty Assembly	34233-HD
Martin® SQC2S™ Square Mainframe Tensioner	38664

INSPECTION DOORS



Martin Engineering USA
 One Martin Place
 Neponset, IL 61345-9766 USA
 800 544 2947 or 309 852 2384
 Fax 800 814 1553
 www.martin-eng.com

**COMPANY WITH
 QUALITY SYSTEM
 CERTIFIED BY DNV
 = ISO 9001:2008 =**

Problem Solved™ GUARANTEED!

Form No. L3370-05-08/12
 © Martin Engineering Company 1999, 2012